



www.dkaudio.fr

E212-33



Two way screen channel extra-flat speaker

E212-33

Extra flat, designed for rooms of 30 to 120 people, it can fit behind all the the screens, even if they are almost sticked to the back wall. The use of two 12" (31cm) speakers, instead of a 15" (38cm) one, a short horn and a very compact neodymium has allowed its depth to be reduced to 17cm (+5mm only around the 80mm diameter driver). Despite this, there is no compromise whith its sound quality. This speaker delivers a real cinema sound in rooms lacking space normally required behind the screen. The low frequency speakers are exclusive models designed by DK Audio.

This speaker normally comes in a passive version (mono-amp.), but it also comes in an active filtering (bi-amp.) version too, upon request.



www.dkaudio.fr

E212-33



TECHNICAL SPECIFICATIONS

Range: 17.85 meters

Capacity - Seats: 30 to 120

Impedance: 4 ohms

Power handling: 800 Watts AES

Output: 97 dB/1W/1m

Bandwidth: 40Hz to 18kHz

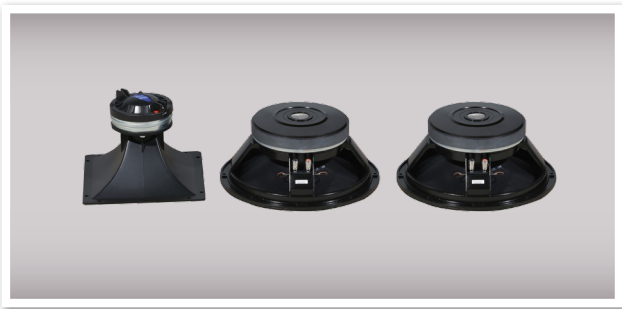
Low frequency speaker: 12" - 3" moving coil

High frequency speaker: 1.4" - 3" moving coil

Horn: Directivity - 90° x 50°

Dim H x L x D: 1200 x 975 x 170/175mm

Weight: 51.60kg



TECHNICAL DRAWING

