



www.dkaudio.fr

## A82MI12 / A102MI12



2 way surround sound cinema speaker

### **A82MI12**

Tilted at 12°, it's the acoustic twin of the A82D. It's equipped with an 8" (21cm) low-mid range speaker, a 1" driver and a constant directivity horn. This speaker performs best in rooms for 30 to 250 people.

Includes black foam front mask.

### **A102MI12**

Tilted at 12°, it uses the same sound system as the A102D. It is equipped with a 10" (26cm) low-mid range speaker, a 1" driver and a constant directivity horn. This speaker performs a very crisp sound in rooms for 80 to 400 people.

Includes black foam front mask.



www.dkaudio.fr

## A82MI12

## A102MI12

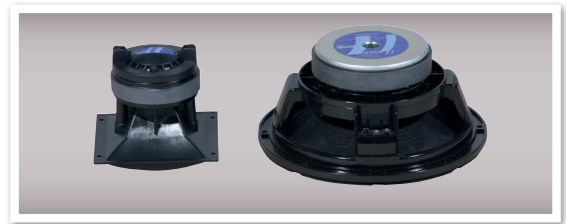
### ▶ TECHNICAL SPECIFICATIONS

Impedance: **8 ohms**  
Power capacity: **150 Watts AES**  
Efficiency: **94 dB/1W/1m**  
Bandwidth: **60Hz to 20kHz**  
Low frequency speaker: **8"**  
High frequency driver: **1"**  
Directivity: **90° x 60°**  
Dim. H x W x D: **450 x 390 x 240/151mm**  
Weight: **11.95kg**



### ▶ TECHNICAL SPECIFICATIONS

Impedance: **8 ohms**  
Power capacity: **200 Watts AES**  
Efficiency: **95 dB/1W/1m**  
Bandwidth: **55Hz to 20kHz**  
Low frequency speaker: **10"**  
High frequency driver: **1"**  
Directivity: **90° x 60°**  
Dim. H x W x D: **520 x 440 x 293/192mm**  
Weight: **16.15kg**



### SHAPE DRAWINGS

