



www.dkaudio.fr

A552-16 / A252C



Extra flat (vertically) 2 way surround sound speakers

A552-16

It is equipped with two 5" (13cm) low-mid range speakers, a 0.8" motor and a constant directivity horn.

Designed to be placed under projection booths or balconies. Lay horizontally.

Includes wall support and acoustic foam on a metal grid.

A252C

With a reduced size, it is equipped with a 5" (13cm) coaxial speaker and a 5" (13cm) low-mid range speaker.

Designed to be placed under projections booths or balconies. Lay horizontally.

Includes acoustic foam on a metal grid. Optional wall bracket.



www.dkaudio.fr

A552-16

A252C

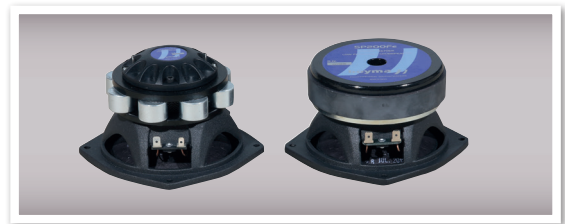
▶ TECHNICAL SPECIFICATIONS

Impedance: **16 ohms**
Power capacity: **200 Watts AES**
Efficiency: **94 dB/1W/1m**
Bandwidth: **70Hz to 21kHz**
Low frequency speakers: **2 x 5"**
High frequency driver: **1"**
Directivity: **90° x 60°**
Dim. H x W x D: **187 x 500 x 240mm**
Weight: **10.1kg**



▶ TECHNICAL SPECIFICATIONS

Impedance: **4 ohms**
Power capacity: **300 Watts AES**
Efficiency: **95 dB/1W/1m**
Bandwidth: **70Hz to 21kHz**
Full-range frequency coaxial speaker: **1 x 5"**
Low-Mid range frequency speaker: **1 x 5"**
Directivity: **90° x 60°**
Dim. H x W x D: **175 x 370 x 182mm**
Weight: **7.55kg**



SHAPE DRAWINGS

